



L160

- download brochure
- compare products
- support

FEATURES

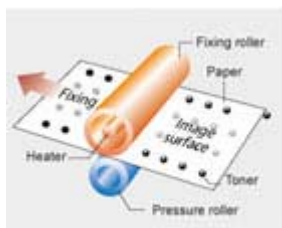
The new L160 features a Super G3 fax modem that transmits a page in merely 3 seconds and has a 346-page fax memory which continues to receive fax even if the machine runs out of paper or toner. It can also print at a speed of 14ppm. The operation panel has also been improved to be more user-friendly and convenient. By combining faxing, copying and printing in a single machine, the new L160 is able to handle all of an office faxing needs efficiently.

Features

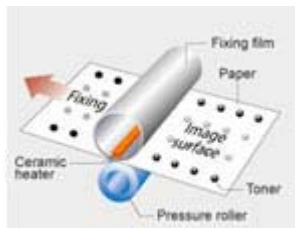
- 346-page fax memory
- 12cpm and 14ppm
- 30-sheet Auto Document Feeder
- Low Power consumption of 3.0W (approx.) in energy saving mode for cost saving
- UHQ™ image processing system ensures fax quality is enhanced
- Compatible to latest versions of Windows and Macintosh operating system
- Standard 16MB RAM capacity for enhanced productivity

Fast and efficient

- Super G3 (33.6kbps) modem gives fast fax transmissions at 3 seconds per page
- On-demand fixing technology for makes possible zero-warm up time

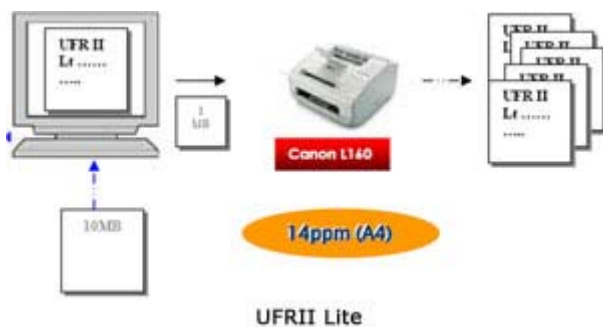


Roller Fixing Method



On-Demand Fixing Method

- UFR II Lite printing technology takes full advantage of user's PC processing power so that the PC does not require additional memory to perform high speed processing
- 30-sheet Auto Document Feeder cuts down need for manual paper feeding, thus saving time when faxing and copying multiple documents.
- Shortcut buttons allow immediate access to commonly used features such as reduction / enlargement, 2-on-1 and collate copying etc.

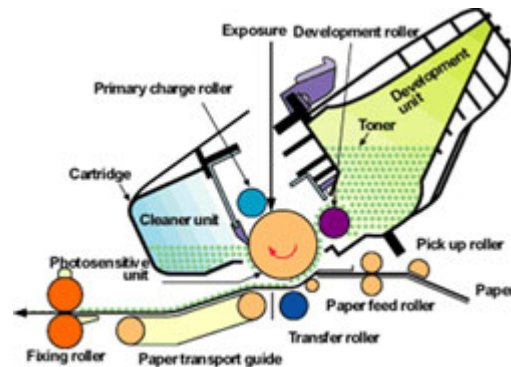


Space-saving

- Compact footprint of 400 x 386 x 221mm
- The paper feeder tray design is compact so that the machine consumes lesser space and reduces untidiness

User-friendly

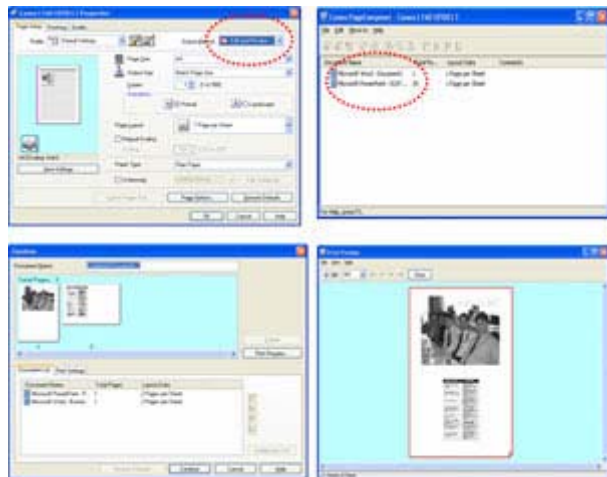
- Easy-to-follow shortcut keys are included on the operation panel for convenient access of functions
- The inclusion of LCD-backlight on the operation panel enables users to view fax display and settings
- Maintenance free all-in-one FX-9 toner cartridge for self replacement



All-In-One Cartridge

- RoHS Compliant in its manufacture, which assures the environment and users' well being.

- Canon's unique Page Composer* utility allows users to combine documents of **different applications** into a single document to print



Canon Page Composer

SPECIFICATIONS

Type	
Machine Type	Monochrome Laser Fax
Available functions	Fax, Copy and Print
Paper Scanning	
Media Handling	
Paper Feeding	150-sheet paper tray (A4 / LTR / LGL)
Auto Document Feeder	30-sheet (A4) / 10-sheet (LGL)
Output Tray Capacity	100-sheet (A4 or LTR, 75g/m ²)
Print Width	Up to LGL
Paper Size	A4 / LGL / LTR / 16K / Folio / Foolscap
Paper Weight	64 - 128g/m ²
Fax	
Modem Speed	Super-G3 , 33.6kbps
Transmission Speed	Approx. 3secs./page
Compression Modes	MH, MR, MMR
Fax Printing Resolution	600 x 600dpi
Fax Scanning Speed	2.6secs./page (Std. Fine)
Greyscale Level	256 level
Fax Scanning Resolution	8 x 3.85 Standard 8 x 7.7 Fine / Photo 8 x 15.4 Super Fine
Density Adjustment Level	9 levels
Transmission Header	Yes
Error Correction Mode	Yes
Memory Transmission	Yes
Direct Transmission at Full Memory	No
Receiving Mode	Fax Only, Manual, Answering Machine, Fax / Tel Autoswitch
Reception Footer	Yes
Auto Receive Image Reduction	Yes (75% - 100%)
Memory Capacity	Up to 346-page (5.7MB)
One-Touch Dials	15 locations
Coded Speed Dialing	100 locations
Group Dialing	15 x 50 locations
Programmable # of Digits	Approx. 50
Sequential Broadcasting	131 locations
Fax Features	Remote Reception: Yes
	Polling: Yes (Tx and Rx)
	Delayed Transmission: Yes (131 locations, 1 pre-set time)
	Confidential Transmission: Yes (By sub-address)
	Relay Broadcasting: Yes (By sub-address)
	Memory Polling: Yes (By sub-address, password)

	Selective Polling:	Yes (By sub-address, password)
	Error Retransmission:	No
	Dual Access:	Yes
	Others:	Memory Lock Reception, Auto Memory Output, System Management Password, DM Preventive Function
Report / List	Activity & Rx / Tx Report:	Up to 60 transactions per page
	Report List:	Memory Data List / Image Print, Lost report due to power cut etc.
	Transmission Report:	Yes
	Reception Report:	Yes
Copy		
Copy Speed	12cpm (A4) / 13cpm (LTR)	
Copy Scan Resolution	200 x 300dpi	
Multiple Copies	Up to 99 copies	
Exposure Adjustment	9 Levels	
Auto Background Control	Yes	
Warm Up Time	< 10 seconds	
Zoom	50% – 200%, 1% increment	
Reserve Copy	No	
Collate Copy	Yes	
PC Print		
Speed	14ppm	
Resolution	600 x 600dpi	
Printing System	UFR II Lite	
Collate Printing	Yes	
Interface / Software		
Standard Port	USB 2.0 High Speed	
Network Print	No	
Network PC-Fax	No	
Network Scan	No	
OS Compatibility	Windows 2000, XP, Vista, MAC OSX	
General Specifications		
Main RAM	16MB	
LCD Backlight	Yes	
Power Consumption	Sleep:	Approx. 3.0W
	Standby:	Less than 8W
	Max:	Less than 700W
Acoustic Noise Levels	Standby:	40dB. >
	In Operation:	66.7dB. <
Dimensions (W x D x H)	400 x 386 x 221mm	
Weight (including Cartridge)	Approx. 8kg	
Power	AC220 - 240 / 50 - 60Hz	
Energy Saving Mode	Yes (Energy Star®)	
RoHS Compliant	Yes	
Toner Cartridge	FX-9 All-In-One Cartridge	
	2,000 pages* ¹	
	Machine comes with starter toner cartridge FX-9S, Yield 1000pgs* ¹	
Add-On Options		
1. Handset Kit		

Specifications are subject to change without notice.

*¹ Yield is basing ITU.T Standard Chart No. 1.

People who viewed the above product also viewed the following

- Please click on product image for more details
- Please select the products for comparison (maximum 2 selections)



L140



L380S



JX-201



[Compare](#)